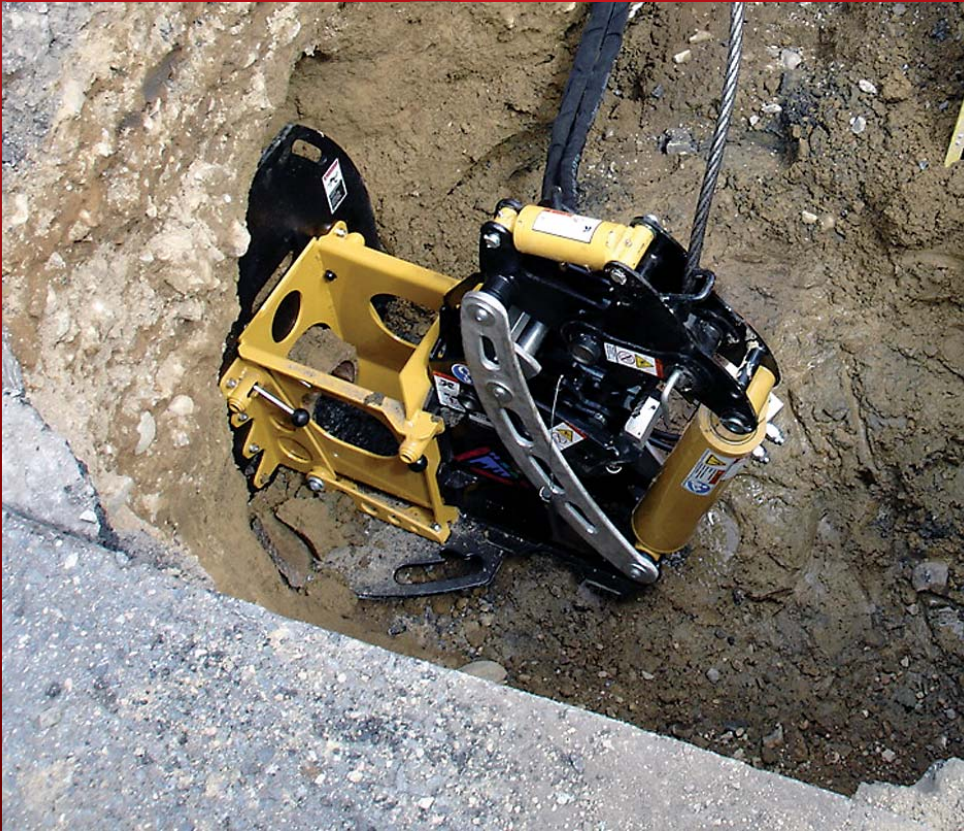


ICUNJ

888-NJ-BURST
Trenchless Technology

PORTABURST® PB30 G2

POWERFUL & ROBUST LATERAL PIPE BURSTING SYSTEM



Rugged System

The Hammerhead® PortaBurst® PB30 G2 is a rugged, portable, cost effective and efficient system for replacing 2" to 6" (50 to 150 mm) lateral pipes. Unlike the pipe lining process, pipe bursting lets you install the same or larger size new HDPE pipe, in a minimum amount of time.

High Production

The PortaBurst PB30 G2 features modular construction with 30 tons of pulling force. Designed to run at 3,000 psi (207 bar) the system can be powered by a backhoe, compact excavator or any other portable hydraulic power pack. Once the unit is up and running production rates of up to 12 feet per minute ensure fast and efficient installation.

Environmentally Friendly

PortaBurst systems require small pits, reducing the amount of excavation and associated surface disruption, resulting in an environmentally friendly project.

Versatile

PortaBurst systems operate at low pressure, allowing them to be run by either a dedicated power pack or any third party power supply that produces 3,000 psi (207 bar) and a minimum 13 gallons per minute flow.

People, Service, and Support

No project is the same, so our dedicated team of industry experts creates customized solutions to meet your needs.



Trenchless Pipe Installation

New HDPE pipe string is installed without joints or couplings and is impervious to roots and leakage.

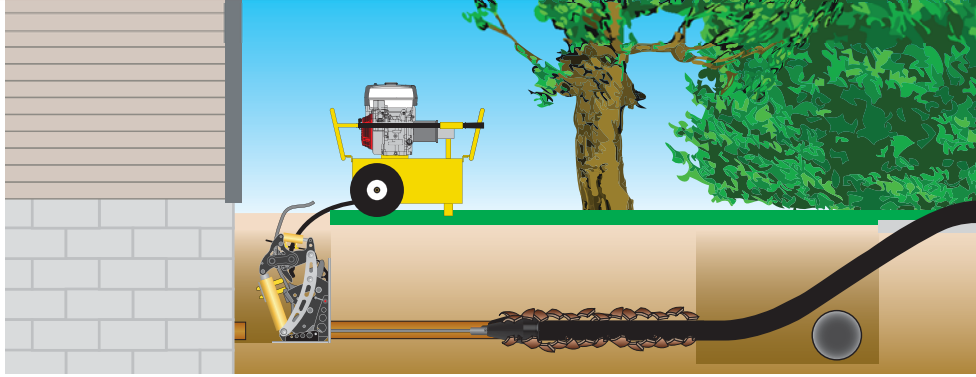


Quick Grip™ Burst Heads

The patent pending design is the quickest and most secure pipe connection in the industry.



ICUNJ



A typical job site with the PortaBurst® PB30 G2 set up at the house. Alternatively the unit can be set up in the basement or at the clean out. The burst head is pulled through the lateral, bursting the existing pipe, while simultaneously pulling in the new pipe.

FEATURES

Compact modular design

Positive Cable Grip System

Quick Grip Burst Heads
(Patent Pending)

Quick Grip Burst Heads
(Patent Pending)

BENEFITS

The modular design of the PortaBurst Gen 2 allows for easy disassembly, assembly and transport and only requires small pits reducing overall excavation. Stand up access to jaw sets simplify cable installation.

An actuating cylinder initiates a positive cable grip and a second cable grip holds the cable in place during recycling. This reduces the bungee effect and helps enhance production.

Our 4" and 6" (100 and 150 mm) bursting heads connect to HDPE pipe without the use of hand tools and negotiate 45° bends. The quickest and most secure pipe connection in the industry.

Our 4" and 6" (100 and 150 mm) bursting heads connect to HDPE pipe without the use of hand tools and negotiate 45° bends.



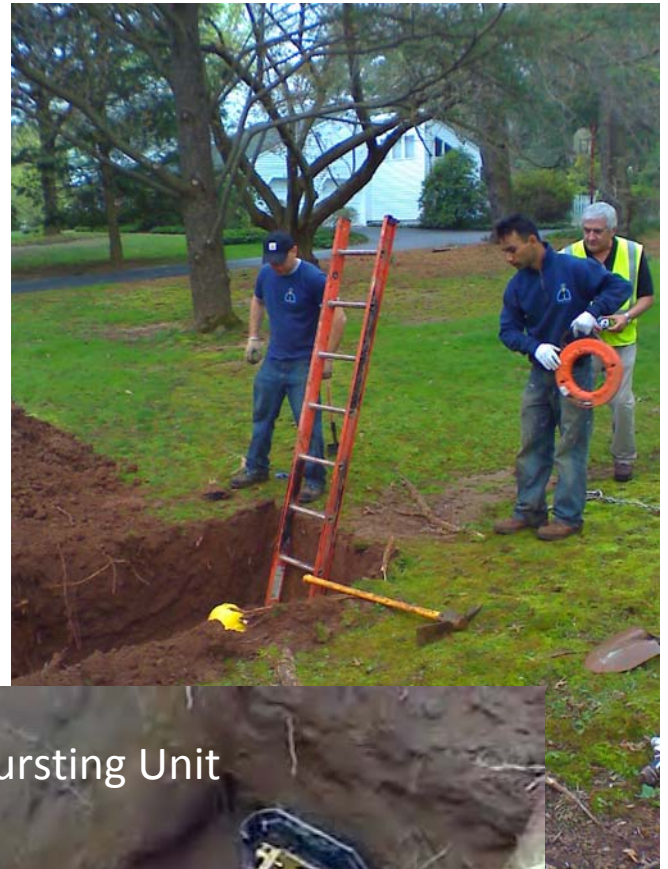
BURSTING UNIT AND CABLE

13 HP HONDA POWER PACK

Rig Size on Resistance Plate L/W/H - in (cm)	25.3/23.5/36.5 (64.2/59.7/92.7)
Total System Weight - lb (kg)	294 (133)
Optional Extraction Cage Weight - lb (kg)	52 (23.6)
Maximum Tonnage	29 tons @ 3,000 psi
Productivity	1 fpm: 2 gpm
Min/Max PSI Requirements - psi (bar)	2,200-3,000 (152 - 207)
Hydraulic Flow Requirements - gpm (lpm)	3-25 (11-95)
Cable Diameter - in (cm)	.75 (1.9) Swaged
Cable Lengths - ft (m)	75, 100, 150 (22.9, 30.5, 45.7)
Power Source Options	13HP or 20HP Power Pack or Other
Pump Flow - g/min (L/min)	6 (23) @ 3,000 rpm
Max. Hydraulic Pressure - psi (bar)	3,000 (207)
Rig Size L/W/H - in (cm)	34/21/30 (87/53/76)
Weight - lb (kg)	250 (114)
Pump Flow - gpm (L/min)	24 (91) @ 2,800 RPM
Hydraulic Pressure Max - psi (bar)	3,000 (207)
Rig Size L/W/H - in (cm)	52.5/23.5/41.5 (133/60/105)
Weight - lb (kg)	690 (313)

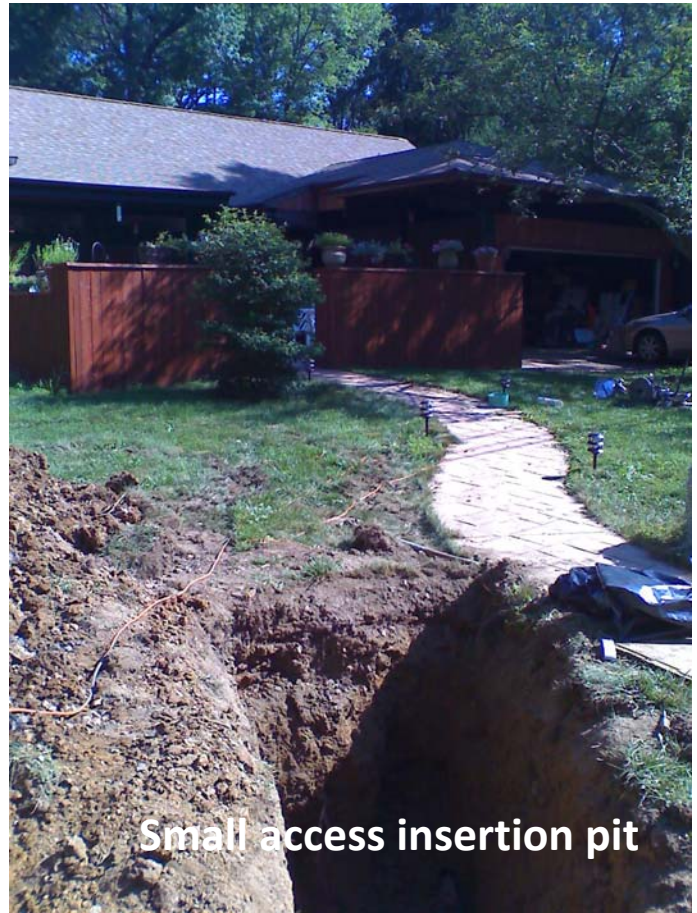
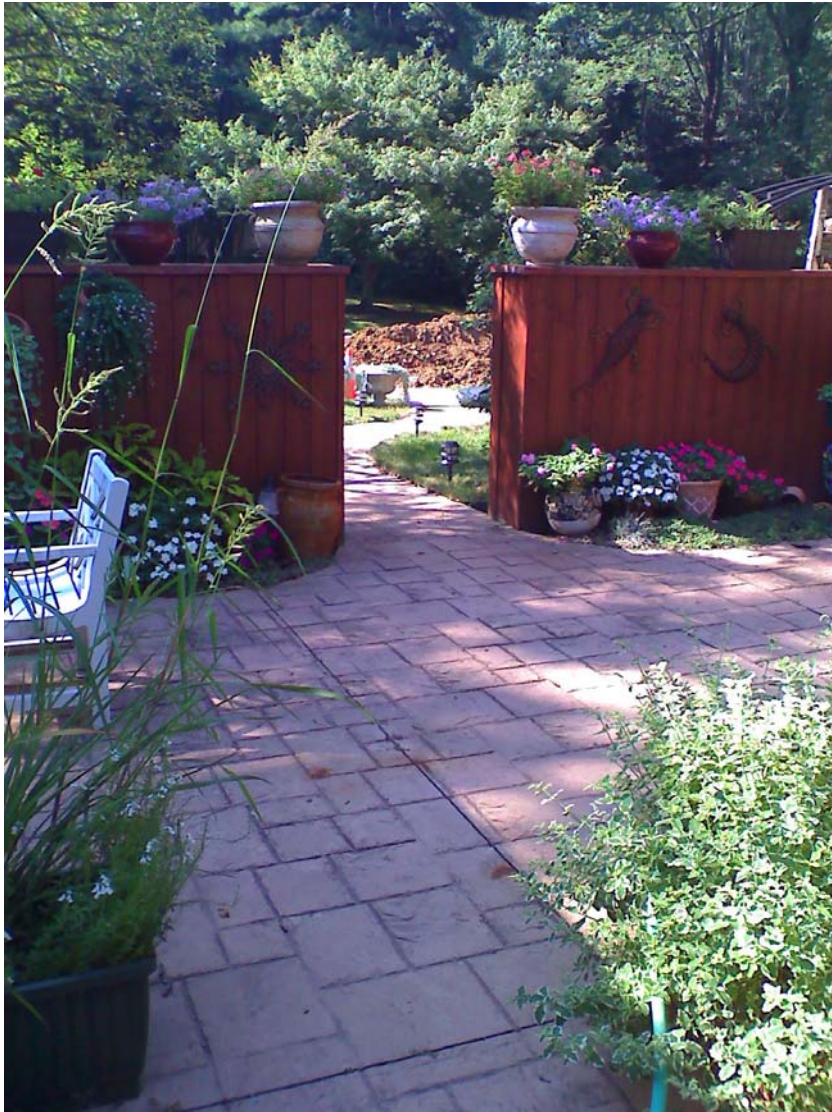
Call 888-NJ-BURST for a **free video inspection**

Preserve Landscape



Our Trenchless replacement of this sanitary sewer Preserved the homeowner's beautiful mature landscape and driveway.

Preserve Hardscape and Structures



Our Trenchless replacement of this sanitary sewer preserved the homeowner's stamped concrete patio, fence, walkway and portico. The bursting unit was employed in the basement, allowing for a complete replacement.

